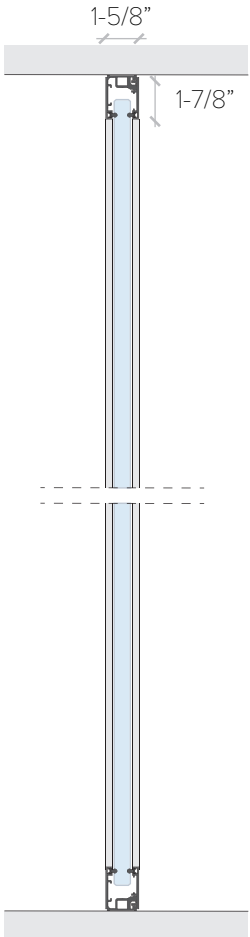


**THESIS SPEC SHEET**  
DEMOUNTABLE WALL



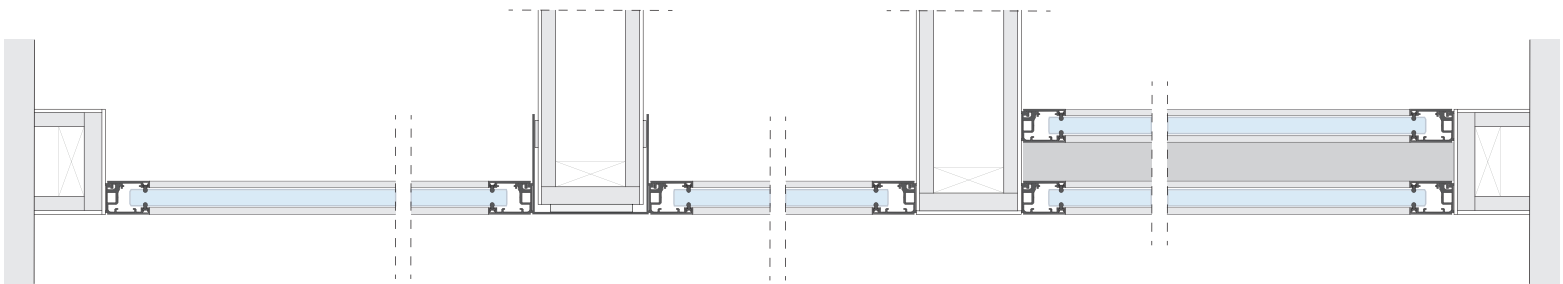
Glass partition

**FRAMING**

- Aluminum frame, 1-7/8" high x 1-5/8" wide
- Top & Bottom track with snap on trim
- Profiles cut on site
- Tolerance - 1/2" / + 1/2"
- Lead times: 8 - 10 weeks after approved shop drawings
- Finishes: Silver, polished, bronze. Anodized aluminum NECE colors and powder coated RAL colors

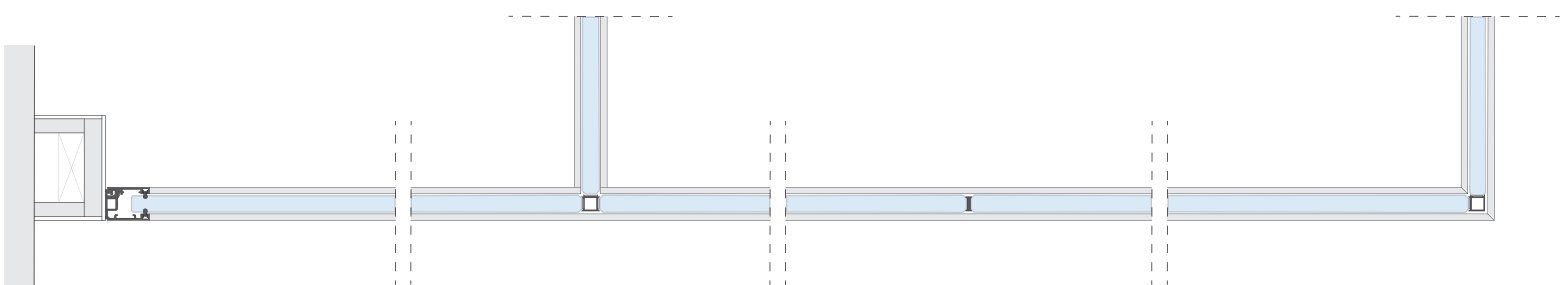
**SINGLE / DOUBLE GLASS**

- Tempered or Laminated glass
- 3/8" (10mm), 1/2" (12mm) and 5/8" (16mm)
- Fully sealed with acoustic gaskets
- Panel allowances: 6 ft. by 11 ft. maximum.
- Panels limited to individual freight car dimensions
- STC 36-43
- Glass tailored to space specific design requirements
- 4-10 weeks lead time after field dimensions depending on glass finish
- Finishes: Acid-etched, back painted, decorative glass, Electrified Privacy glass, etc



aluminum cap

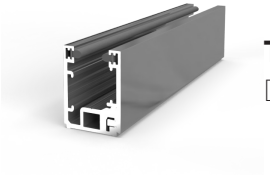
single glazed to double glazed partitions



3-way connection

aluminum mullion

90° connection



## THEESIS SPEC SHEET

### DEMOUNTABLE WALL

## SWING DOOR

- Doors available in glass or wood
- 3/8" or 1/2" thick tempered glass, frameless or framed leaf
- Door jambs and track dimensions remain consistent and homogenous with perimeter profiles
- Offset aluminum pivot hinges (3) up to 9'-6", (4) up to 11'-0"
- Acoustic gaskets at door jambs and bottom drop seals available
- Proprietary aesthetic integrated hardware
- Overhead closers available
- Fully compliant with US locking requirements and ADA codes
- Special finishes available upon request

